



Personal Leadership Development

Why are we here?

Leadership ability determines a person's effectiveness.

INTRODUCTION:

About Ministry Ventures

Ministry Ventures was founded in 1999 by Boyd Bailey and has trained over 1000 faith based organizations in the 5 Best Practices of Prayer—Board Development—Administration—Ministry Model—Fundraising.

1. Consider What It Means to Be a Healthy and Successful Ministry

A healthy ministry has:

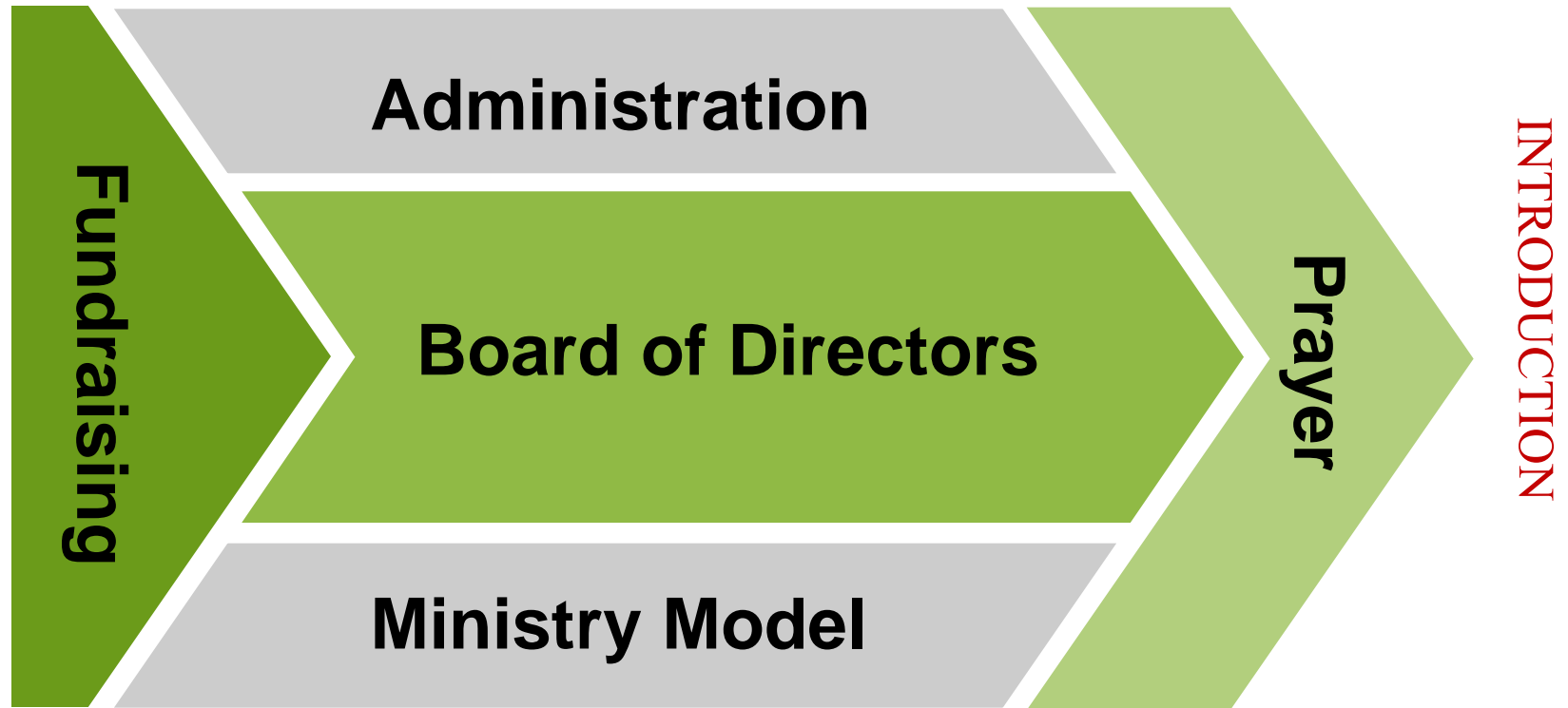
- a. Support from the local church.
- b. Well-networked leadership.
- c. Adequate and balanced resources.
- d. Ministry alignment and focus.
- e. Collaboration with others doing similar activities.

1. Consider What It Means to Be a Healthy and Successful Ministry

A healthy ministry has:

- f. Community support.
- g. Emphasis on execution and accountability.
- h. Scalability for growth... consider partnerships
- i. Wise guidance from those with experience.

The 5 Best Practices



Ministry Ventures' 5 Best Practices

1. **Prayer**: Make your prayer support intentional by developing a prayer team with a mission and a plan to make that mission come alive.
2. **Board of Directors**: Build an engaged board of directors who know what they are there for and can partner in fulfilling the mission.

Ministry Ventures' 5 Best Practices

3. **Ministry Model**: **Develop your leadership style & team.** Determine what service you're here to provide, whom you are providing it for, and how to do it effectively.
4. **Administration**: Know what your responsibilities are, and create a plan that prevents you from doing them all yourself.

Ministry Ventures' 5 Best Practices

5. **Fundraising**: Ensure that the resources are in place to make your model thrive in an honorable way.

Training is like evangelism it changes your thinking.

Coaching is like discipleship it changes your behavior.

MV Standards for Best Practices Sheet

How Ministry Mastery Essentials Works

- ✓ 6 months for Ministry Mastery coaching program
- ✓ Online Ministry Mastery Essentials
- ✓ Two-day Ministry Mastery Essentials workshop
- ✓ Assigned a head coach with a team of ICF-certified coaches
- ✓ Time-tested curriculum (self-study model)
- ✓ Over 20 hours of Ministry Mastery Essentials customized coaching
- ✓ Focused on curriculum content and daily challenges
- ✓ Certification to leverage this powerful ministry program

"While it is revealing to consider what constitutes a leader, your search for understanding, for some kind of leadership formula, is apt to end in frustration. It is like studying Michelangelo or Shakespeare: You can imitate, emulate, and simulate, but there is simply no connect-the-dots formula to Michelangelo's David or Shakespeare's Hamlet. I suppose, when all is said and done, it really comes down to this: People are leaders because they choose to lead."

1. No Magic Leadership Formula:

- Develop your God-given gifts
- Use tools such as RightPath
- Identify areas of growth
- Focus on strenghts
- Style has to be natural and not forced

2. What Gorilla? (Video <http://www.youtube.com/watch?v=dpktHJXfCzI>)

- Not just about Addiction
- What is draining your energy?
- What is consuming your time?
- What is hindering your growth?
- Is there a gorilla in your life?
- Exercise: Ask God to reveal to you what He wants you to remove from your life

3. Seek Christ for Guidance:

- The ultimate model of Servant Leader
- Turn to God and ask HIM
- God's thoughts are bigger than our thoughts: Isaiah 55:8-9

“My thoughts are nothing like your thoughts,” says the Lord. “And my ways are far beyond anything you could imagine. For just as the heavens are higher than the earth, so my ways are higher than your ways and my thoughts higher than your thoughts.”

- We should rely on God's understanding and not our own:

Matthew 7:7-9 “Keep on asking and it will be given you, keep on seeking and you will find, keep on knocking (reverently) and (the door) will be opened to you. For everyone who keeps on asking receives, and he who keeps on seeking finds, and to him who keeps knocking, (the door) will be opened or what man is there of you, if his son asks him for a loaf of bread, will hand him a stone?”

3. Seek Christ for Guidance:

- If we seek God's wisdom it will be given: Proverbs 3:5-6

“Lean on, trust in, and be confident in the Lord with all your heart and mind and do not rely on your own insight or understanding. In all your ways know, recognize, and acknowledge Him, and He will direct and make straight and plain your paths.”

- Prayer Strategy:

Heavenly Father, as our Leader of Leaders, what are our leadership needs of YOUR ministry?

4. What's “The Win”?

- Is there friction in your ministry?
- What's that you want to look back and celebrate
- To what Vision is God calling you?
- Is it based on faith or your sight?
- How to clarify “The Win” for your ministry—Tools
 - Clear and compelling messaging
 - Clarity in vision, values, mission, strategy
 - Building brand equity
 - Integrating brand into your marketing message

Exercise: “Putting your brand into words”

5. Creating Victories and Momentum

Leader's best friend—7 key points

- It is the great exaggerator
- It makes the leader look better than they really are
- Helps followers perform better than they are
- Easier to steer than to start
- The most powerful change agent
- Is the leader's responsibility
- Begins inside the leader

5. Creating Victories and Momentum

How to create momentum?

- By recording and celebrating victories

Personal Example _____

- What's the worst that can happen test?

Personal Example _____

- Involvement in serving others & expecting nothing in return

Personal Example _____

- Prayer and confidence knowing that God will even use what we think is bad for good.






Personal Example _____

IF YOU GET NOTHING ELSE.....

There is a LAW OF THE LID, as JOHN Maxwell calls it, the higher the leader's ability to lead, the higher the lid on his potential. For example, if you are rated a 6 you will never lead those above a 5 and your effectiveness is thus limited. That is why good leadership abilities are so critical. In ministry, we need to be surrounded by leaders.

Leadership ability determines a person's effectiveness.

Where do we go from here?

1. Schedule complimentary consultation call with Jesse 
2. Pray with your spouse 
3. Seek approval from your board 
4. Brainstorm funding sources with MV 
5. Begin Ministry Mastery Essentials or Consulting 

Tools & Services

- Funding Plan
- Communication Plan
- Personal & Tena Leadership Development Plan
- Marketing Plan: Messaging, Branding
- Board Development and Training
- Succession Planning
- Financial Management
- S.W.O.T—Vision, Mission, Strategy, Values
- Key Indicator Report/Snapshot
- Church Capital Fundraising



QUESTIONS?

**Jesse Altamarino
Regional Consultant
Ministry Ventures**

813-731-5676

Jaltamarino@MinistryVentures.org